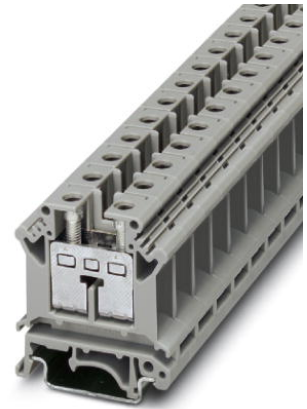


UIK 16

Order No.: 3006153



<http://eshop.phoenixcontact.de/phoenix/treeViewClick.do?UID=3006153>

Universal terminal block with screw connection, cross section: 4 - 16 mm², AWG: 12 - 4, width: 12.0 mm, color: gray

Commercial data

EAN	4017918091378
Pack	50 Pcs.
Customs tariff	85369010
Weight/Piece	0.02202 KG
Catalog page information	Page 279 (CL-2007)

Product notes

WEEE/RoHS-compliant since:
01/01/2005



<http://www.download.phoenixcontact.com>
Please note that the data given here has been taken from the online catalog. For comprehensive information and data, please refer to the user documentation. The General Terms and Conditions of Use apply to Internet downloads.

Technical data

General

Number of levels	1
Number of connections	2
Color	gray
Insulating material	PA
Inflammability class acc. to UL 94	V2

Dimensions

Width	12.2 mm
Length	42.5 mm
Height NS 35/7,5	47 mm
Height NS 35/15	54.5 mm
Height NS 32	52 mm

Technical data

Maximum load current	101 A (with 25 mm ² conductor cross section)
Rated surge voltage	6 kV
Pollution degree	3
Surge voltage category	III
Insulating material group	I
Connection in acc. with standard	IEC 60947-7-1
Nominal current I _N	76 A
Nominal voltage U _N	400 V

Connection data

Conductor cross section solid min.	2.5 mm ²
Conductor cross section solid max.	25 mm ²
Conductor cross section stranded min.	4 mm ²
Conductor cross section stranded max.	16 mm ²
Conductor cross section AWG/kcmil min.	12
Conductor cross section AWG/kcmil max	4
Conductor cross section stranded, with ferrule without plastic sleeve min.	1.5 mm ²
Conductor cross section stranded, with ferrule without plastic sleeve max.	16 mm ²
Conductor cross section stranded, with ferrule with plastic sleeve min.	1.5 mm ²
Conductor cross section stranded, with ferrule with plastic sleeve max.	16 mm ²
2 conductors with same cross section, solid min.	1.5 mm ²
2 conductors with same cross section, solid max.	6 mm ²
2 conductors with same cross section, stranded min.	1.5 mm ²
2 conductors with same cross section, stranded max.	6 mm ²

2 conductors with same cross section, stranded, ferrules without plastic sleeve, min.	1.5 mm ²
2 conductors with same cross section, stranded, ferrules without plastic sleeve, max.	4 mm ²
2 conductors with same cross section, stranded, TWIN ferrules with plastic sleeve, min.	0.75 mm ²
2 conductors with same cross section, stranded, TWIN ferrules with plastic sleeve, max.	10 mm ²
Type of connection	Screw connection
Stripping length	11 mm
Screw thread	M4
Tightening torque, min	1.5 Nm
Tightening torque max	1.8 Nm

Certificates / Approvals

Approval logo



CSA

Nominal voltage U _N	600 V
Nominal current I _N	85 A
AWG/kcmil	22-4

CUL

Nominal voltage U _N	600 V
Nominal current I _N	85 A
AWG/kcmil	22-4

UL

Nominal voltage U _N	600 V
Nominal current I _N	85 A
AWG/kcmil	22-4
Certification	CCA, CSA, CUL, KEMA, UL

Accessories		
Item	Designation	Description
Assembly		
3003224	ATP-UK	Separating plate, for visual and electrical separation of terminal groups, width: 1.5 mm, color: Gray
3022218	CLIPFIX 35	Snap-on end bracket, for 35 mm NS 35/7.5 or NS 35/15 mounting rail, can be fitted with Zack strip ZB 8 and ZB 8/27, terminal strip marker KLM 2 and KLM, width: 9.5 mm, color: gray
3003020	D-UK 4/10	Cover, width: 1.8 mm, color: gray
1201442	E/UK	End clamp, for supporting the electronic base. If mounted vertically, 2 end clamps are required in each case
1201028	NS 32 AL UNPERF 2000MM	G rail 32 mm (NS 32)
1201280	NS 32 CU/120QMM UNPERF 2000MM	G-profile DIN rail, deep-drawn, material: Copper, unperforated, height 15 mm, width 32 mm, length 2 m
1201358	NS 32 CU/35QMM UNPERF 2000MM	G-profile DIN rail, material: Copper, unperforated, height 15 mm, width 32 mm, length 2 m
1201002	NS 32 PERF 2000MM	G-profile DIN rail, material: Steel, perforated, height 15 mm, width 32 mm, length 2 m
1201015	NS 32 UNPERF 2000MM	G-profile DIN rail, material: Steel, unperforated, height 15 mm, width 32 mm, length 2 m
0801762	NS 35/ 7,5 CU UNPERF 2000MM	DIN rail, material: Copper, unperforated, height 7.5 mm, width 35 mm, length: 2 m
0801733	NS 35/ 7,5 PERF 2000MM	DIN rail, material: Steel, perforated, height 7.5 mm, width 35 mm, length: 2 m
0801681	NS 35/ 7,5 UNPERF 2000MM	DIN rail, material: Steel, unperforated, height 7.5 mm, width 35 mm, length: 2 m
1201756	NS 35/15 AL UNPERF 2000MM	DIN rail, deep-drawn, high profile, unperforated, 1.5 mm thick, material: Aluminum, height 15 mm, width 35 mm, length 2 m
1201895	NS 35/15 CU UNPERF 2000MM	DIN rail, material: Copper, unperforated, 1.5 mm thick, height 15 mm, width 35 mm, length: 2 m
1201730	NS 35/15 PERF 2000MM	DIN rail, material: Steel, perforated, height 15 mm, width 35 mm, length: 2 m
1201714	NS 35/15 UNPERF 2000MM	DIN rail, material: Steel, unperforated, height 15 mm, width 35 mm, length: 2 m
1201798	NS 35/15-2,3 UNPERF 2000MM	DIN rail, material: Steel, unperforated, 2.3 mm thick, height 15 mm, width 35 mm, length: 2 m
1302215	TS-K	Separating plate, for electrical separation of neighboring bridges, can be fitted later, no loss of pitch, color: Gray
Bridges		
3006137	EB 10-12	Insertion bridge, 10-pos., divisible, fully insulated

0200075	FBI 2-12	Fixed bridge, for cross connections, with screws, screw heads without insulation, 2-pos.
0203454	FBI 10-12	Fixed bridge, 10-pos., screw heads with insulating collar, divisible, with screws
0202235	SB 2- 8/13	Switching bridge, 2-pos.

Marking

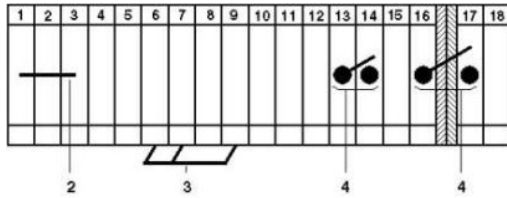
1007248	SBS10:UNBEDRUCKT	Marker cards, unprinted, for individual labeling with the M-PEN, 250-section, perforated, white plastic
0805373	WSI 4-12	Warning plate, with 2 plastic screws, across 4 terminal blocks, pitch 12 mm
0805386	WSI 5-12	Warning plate, with 2 plastic screws, across 5 terminal blocks, pitch 12 mm
1050525	ZB10:SO/CMS	Zack strip, 10-section, divisible, special printing, marking according to customer requirements

Plug/Adapter

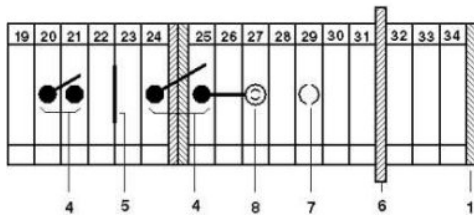
0311647	PS-MT	Test plug, consisting of: metal part for 4 mm diameter socket hole and insulating sleeve for PS metal part
0303299	PSB 4/7/6	Test plug socket, not insulated, length: 7 mm, screw thread width: 4 mm, socket width: 6 mm
0303406	PSBJ 4/15/6 BK	Test plug socket, insulated, length: 15 mm, screw thread width: 4 mm, socket width: 6 mm, insulation material in black
0303354	PSBJ 4/15/6 BU	Test plug socket, insulated, length: 15 mm, screw thread width: 4 mm, socket width: 6 mm, insulation material in blue
0303419	PSBJ 4/15/6 FARBLOS	Test plug socket, insulated, length: 15 mm, screw thread width: 4 mm, socket width: 6 mm, insulation material transparent
0303370	PSBJ 4/15/6 GN	Test plug socket, insulated, length: 15 mm, screw thread width: 4 mm, socket width: 6 mm, insulation material in green
0303396	PSBJ 4/15/6 GY	Test plug socket, insulated, length: 15 mm, screw thread width: 4 mm, socket width: 6 mm, insulation material in gray
0303325	PSBJ 4/15/6 RD	Test plug socket, insulated, length: 15 mm, screw thread width: 4 mm, socket width: 6 mm, insulation material in red
0303383	PSBJ 4/15/6 VT	Test plug socket, insulated, length: 15 mm, screw thread width: 4 mm, socket width: 6 mm, insulation material in violet
0303312	PSBJ 4/15/6 WH	Test plug socket, insulated, length: 15 mm, screw thread width: 4 mm, socket width: 6 mm, insulation material in white
0303367	PSBJ 4/15/6 YE	Test plug socket, insulated, length: 15 mm, screw thread width: 4 mm, socket width: 6 mm, insulation material in yellow

Drawings

Circuit diagram



- 1 = cover
- 2 = fixed bridge
- 3 = insertion bridge
- 4 = switch bar for 2 terminal blocks
- 5 = separating plate
- 6 = partition plate
- 7 = test plug socket, for test connection with test plug PS
- 8 = test plug socket, insulated, can only be used with FBI



Address

PHOENIX CONTACT Inc., USA
586 Fulling Mill Road
Middletown, PA 17057, USA
Phone (800) 888-7388
Fax (717) 944-1625
<http://www.phoenixcon.com>



© 2008 Phoenix Contact
Technical modifications reserved;